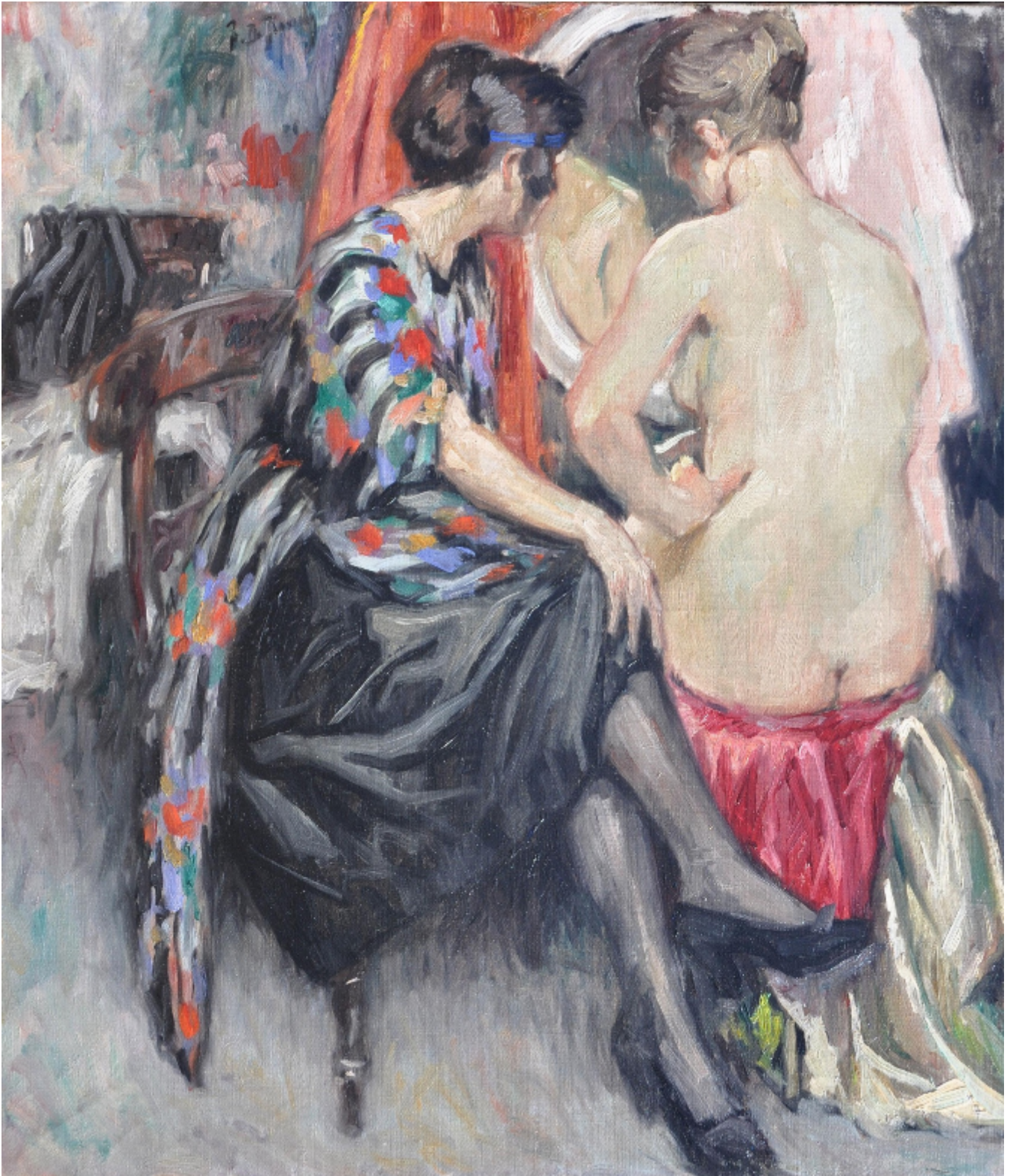


JOHN BENNETT fine paintings

Le Miroir
RENÉ DE PAUW

£8,500



REF: 346135

Height: 80.5 cm (31.7")

Width: 70.5 cm (27.8")

Framed Height: 97.3 cm (38.3")

Framed Width: 87 cm (34.3")

Description

René de Pauw was a painter of portraits, nudes, floral still lifes and landscapes which were distinctive for the predominance of white and their limpid clarity, imbued with a retrograde influence of French Impressionism.

He studied at L'Académie de Bruges from 1912 to 1913 and established himself in Brussels following the cessation of the Great War. In 1930, he suddenly had a transformative moment which influenced the next period of his oeuvre. He had taken a particular interest in fishermen and their lives, both in their working and family environments and how both were shaped and defined by the sea. This period of painting was distinctive in that the majority were painted on panel and he utilised a sombre palette with the bony figures quite dominant in the painting, almost monumental. In this, they are redolent of the work of Paul Permeke.

Apart from being a painter in oils, de Pauw was also caricaturist, illustrator, designer and engraver. He was responsible for the murals in the railway station in Bruges and illustrated books and produced caricatures for Bruges publications.

Examples of his work can be seen in La Musée Groeninge in Bruges and the Antwerp Museum. Examples of some of his works include: "Maternité", "La Pauvre Idylle", "Kermesse", "Femme à la Cruche", "Jeune Femme assise au Miroir", "Sur les Bancs de Flandre", "Bacchenten", "Nature morte aux Anemones" and "Nature morte au Canard et aux Oeufs".

Bibliography: Dictionnaire des Artistes Plasticiens de Belgique des XIXe et XXe
Siccles - Paul Piron
Arto Dictionnaire Biographique Arts Plastiques en Belgique
Dictionnaire des Peintres - E Benezit