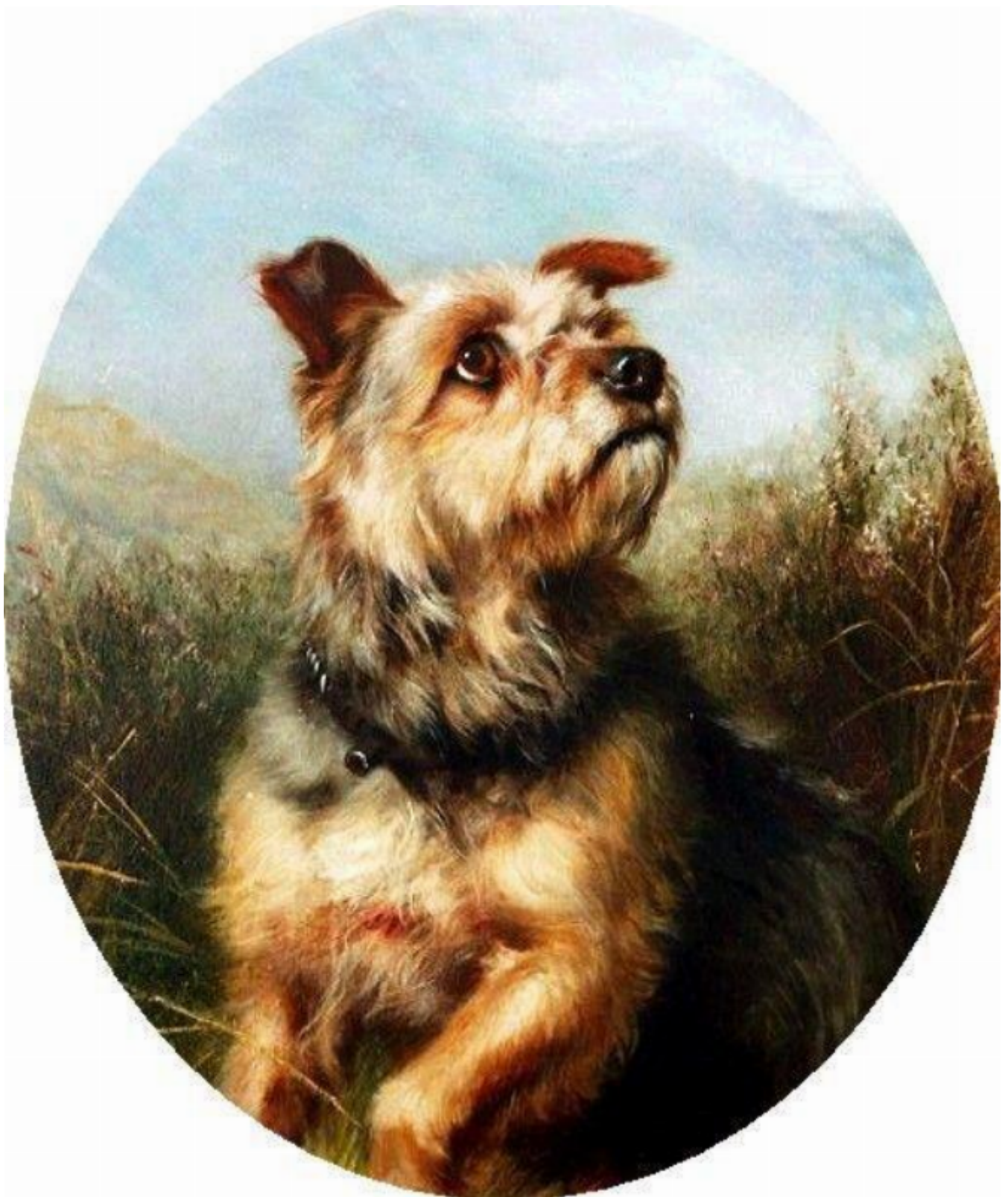


JOHN BENNETT fine paintings

A Norfolk Terrier in a Landscape

THOMAS EARL

Sold



## Description

THOMAS EARL 19th Century English School A Norfolk terrier in landscape Oil on canvas, signed and dated 1864 45.7 x 35.5cms

Thomas Earl was George Earl's older brother and the uncle of Maud and the horse painter Percy Earl. All are well known animal painters but Thomas was painting about twenty years earlier than George. Both brothers were highly proficient portrayers of dogs, with an ability to capture the character of their subject with superbly painted eyes. Their styles are similar though Thomas tended towards a more sentimental rendering.

Earl chose dogs and rabbits as his most frequently painted subjects. Forty-seven of his paintings were exhibited at the Royal Academy between 1840 and 1880 and sixty-two at the British Institute. Titles included Cat and Dog Life, The Dream of the Hound, and The Rabbit Family. 108 further works found their way to Royal Society of British Artists exhibitions at Suffolk Street in London.

Earl is thought to have occasionally painted the animals in the landscapes of the renowned Norwich School painter, Henry Bright. His address is recorded as 39 Highgate Road, London.

## Bibliography:

The Dictionary of British Artists- J. Johnson and A.Gruetmer

The Dictionary of Victorian Painters- Christopher Wood

Dog Painting 1840-1940- William Secord